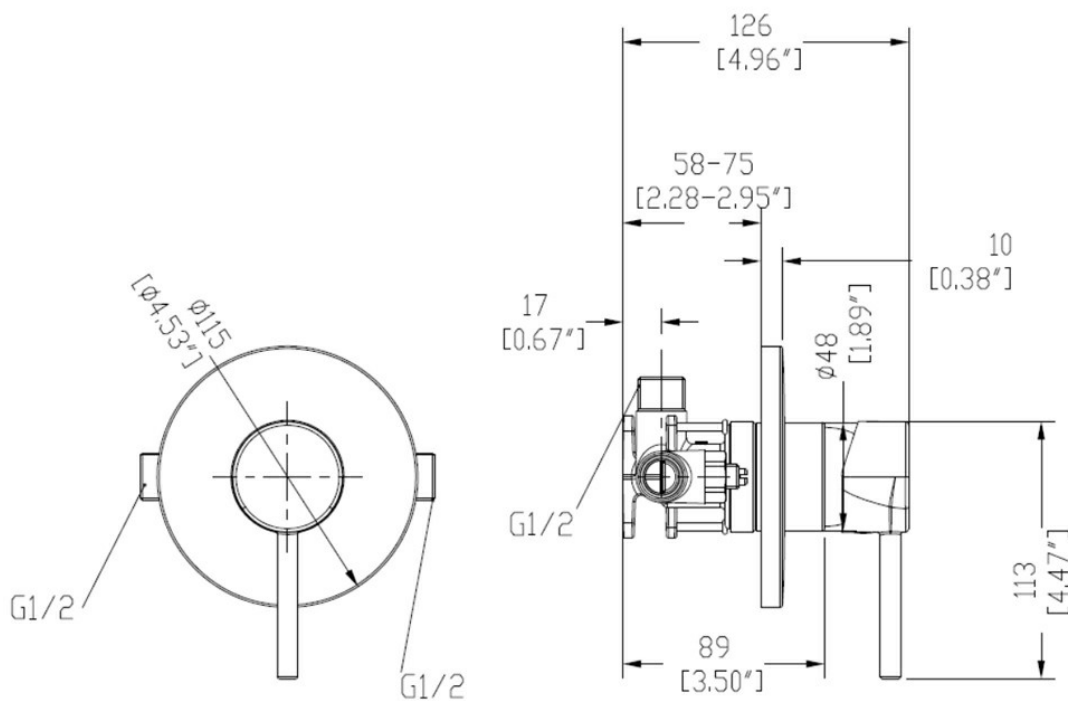











UNO MULTI PRESSURE SHOWER MIXER
42970.xx

ELEMENTi



10	Guarantee	10 Year Guarantee
5	Guarantee	5 Year Guarantee on coloured finish
	Mains Pressure	Suitable for Mains Pressure.
	Multi Pressure	Suitable for Multi Pressure.
	Flawless Finish	Advanced plating provides a durable surface with a long lasting finish
	Effortless Control	Advanced cartridge technology provides a wide operating angle and smooth operation
	Indicators	Includes standard and coloured indicators.
	5 Ticks Standards Mark	<p>The 5 Ticks Standards Mark™ certifies this product meet strict quality, safety, and performance standards.</p>
	Chrome Plate	A base of copper is first applied followed by a layer of nickel and then finally a hard gloss coating of chromium to achieve a shiny hard wearing finish.
	Electroplated: Gun Metal	Electrical current is used to dissolve components into Lacquer that then adhere to the surface.
	Electroplated: Black	Electrical current is used to dissolve components into Lacquer that then adhere to the surface.



Electroplated with
PVD: Brushed Nickel

Electrical current is used to dissolve components into Lacquer that then adhere to the surface. A thin metal-spray coating in the form of very thin layers is finally applied using PVD process.



Electroplated with
PVD: Brushed Brass

Electrical current is used to dissolve components into Lacquer that then adhere to the surface. A thin metal-spray coating in the form of very thin layers is finally applied using PVD process.



BPIR - Importer

Robertson NZ Ltd.



BPIR - Place of
Manufacture

China



BPIR - Relevance
Documentation

<p>For detailed information on Relevant Building Codes & Statement of Contribution please visit ROBERTSON.CO.NZ/DOWNLOADS and browse the relevant section</p>



BPIR - Scope of use

Shower mixers combine hot and cold water to regulate temperature for showers, ensuring a comfortable and safe bathing experience.



BPIR - B2.3.1
Durability

This product complies with Building Code Regulation B2.3.1 Durability



BPIR - G12.3.2 (B)
G12 Water Supplies

This product complies with Building Code Regulation G12.3.2 (B) G12 Water Supplies



BPIR - G12.3.7 G12
Water Supplies

This product complies with Building Code Regulation G12.3.7 G12 Water Supplies

The Uno collection offers a glamorous look without being too ostentatious. After years of chrome dominating as the must-have metal, there has been a move away from the high shine, perfect finish of Chrome towards finishes like Brushed Nickel, Gun Metal, Black and Brushed Brass.