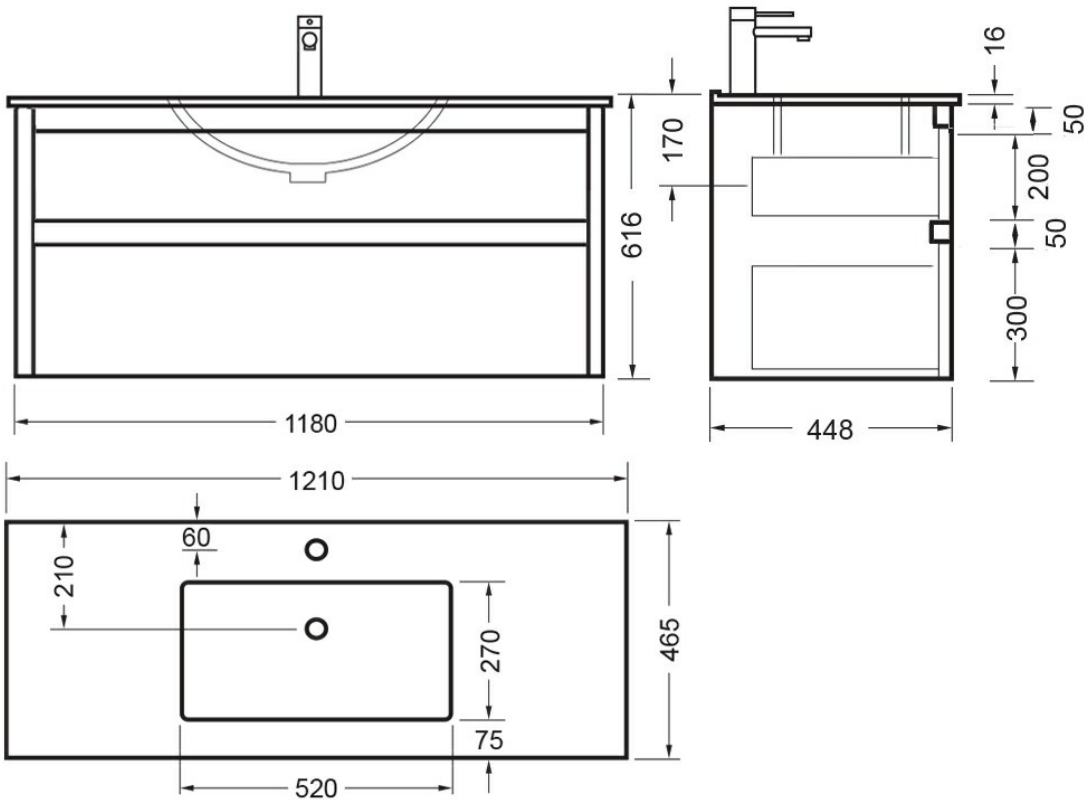
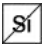









NOVARA WALL VANITY 1200 2X DRAWER - CURVED VITREOUS CHINA DEZIGNA WHITE GLOSS

84340.xx

ELEMENTi



	Silica Free	No use of Silica on vanity tops making it safer for you & the family
	Residential/Light Commercial Use	Suitable for Residential/Light Commercial Use (Kitchens, Bathrooms and Laundries in Hotels, Motels and Retirement Villages).
	Guarantee	5 Year Guarantee
	Hafele Lifetime Warranty	All Hafele Hardware comes with a Lifetime Warranty.
	Moisture Resistant	Made from Moisture Resistant Board
	Soft Close Drawer System	Incorporates Soft Close Drawer and Doors.
	Environmental Choice	Product manufactured predominantly from sustainably grown New Zealand plantation pine forests and is Environmental Choice Certified.
	Made in New Zealand	Designed & Engineered in New Zealand



Crisp lines, a clean finish and impressive features; a stylish and practical option for any space, our Elementi Novara bathroom vanities are available in 12 cabinet finishes with various top options to suit even the most particular of tastes.