

Fleet MODULAR

Reflect your style with Fleet's 'build your own' customisable design. With flexibility to place the drawers anywhere within the Frame cabinet, a separate basin can be installed above each drawer or open space, creating a symmetrical or off-centre look.



Fleet 1600 Perfect White Frame, 600 Drawers in Triple Duck Egg, Soji Black Pill Mirrors and Quadra Basins

Soft closing adjustable drawers

Wall hung cabinet

Position your basin over the drawer or open space

Top edge mount handle

Solid Surface bench top in matt white

Requires a top mount basin

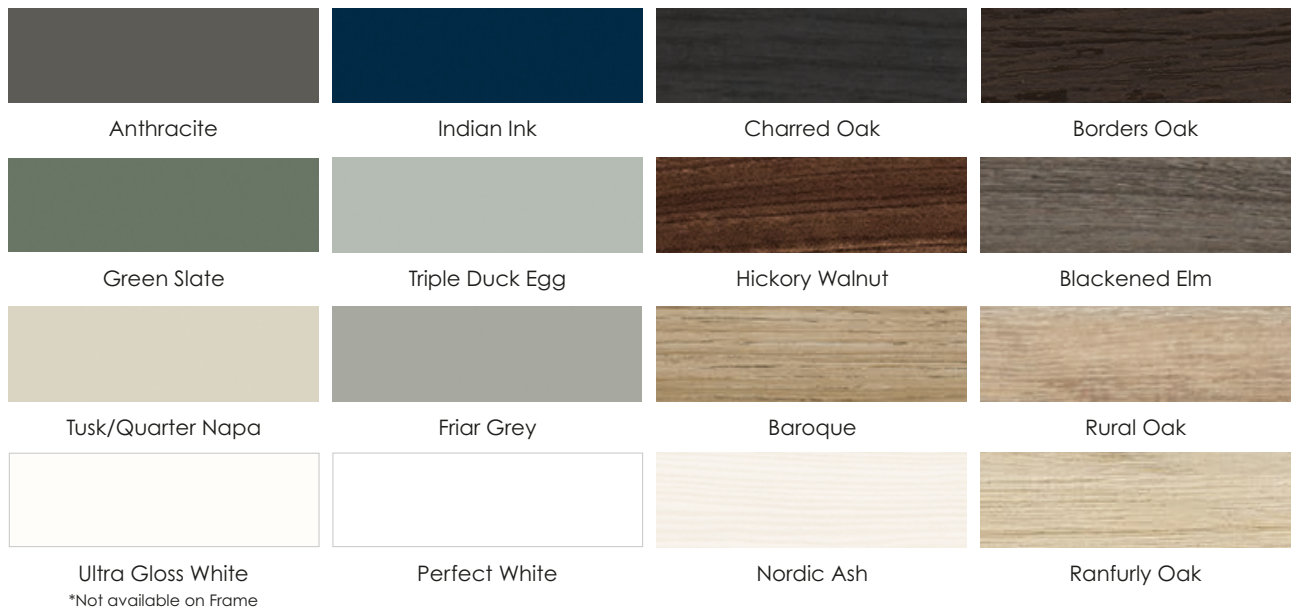
No tap hole to allow for custom placement or wall mount tapware

SpaceMate® compact waste traps are required for all basins installed above a drawer to provide adequate clearance (additional)

Sizes

900 | 1200 | 1400 | 1600mm

Finishes



Fleet Bench Top Solid Surface 15mm matt white finish



Optional Basins Details and more designs on pages 24 & 25



Nikau Handle Supplied with Brushed Silver handle as standard.



Dimensions are nominal. For further specifications and information visit athena.co.nz
Printed colours are a guide only and may appear different to the actual product.

Fleet Frame and Drawer Specifications

WHEN ORDERING: Complete your chosen product below by specifying one of the following cabinet finishes in the blank space at the end of the code _
Use **S** for all colours shown above or refer to athena.co.nz for colour specific codes



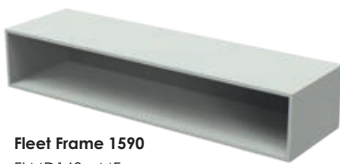
Fleet Frame 890
FLMD090__MF
W890 x H300 x D455



Fleet Frame 1190
FLMD120__MF
W1190 x H300 x D455



Fleet Frame 1390
FLMD140__MF
W1390 x H300 x D455



Fleet Frame 1590
FLMD160__MF
W1590 x H300 x D455



Fleet Drawer 450
FLMD045__DW
W450 x H300 x D455



Fleet Drawer 600
FLMD060__DW
W600 x H300 x D455



Fleet Drawer 857
FLMD090__DW
W857 x H300 x D455

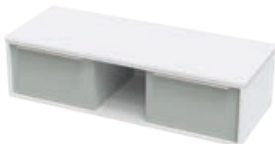


Fleet Drawer 1157
FLMD120__DW
W1157 x H300 x D455

Suggested Layouts



Fleet Frame 890 with Top
450 Drawer
W900 x H315 x D460



Fleet Frame 1190 with Top
Two 450 Drawers
W1200 x H315 x D460



Fleet Frame 1390 with Top
Two 450 Drawers
W1400 x H315 x D460



Fleet Frame 1590 with Top
Two 450 Drawers
W1600 x H315 x D460



Fleet Frame 890 with Top
857 Drawer
W900 x H315 x D460



Fleet Frame 1190 with Top
600 Drawer
W1200 x H315 x D460



Fleet Frame 1390 with Top
600 and 450 Drawer
W1400 x H315 x D460



Fleet Frame 1590 with Top
Two 600 Drawers
W1600 x H315 x D460



Fleet Frame 1190 with Top
1157 Drawer
W1200 x H315 x D460



Fleet Frame 1390 with Top
857 Drawer
W1400 x H315 x D460



Fleet Frame 1590 with Top
857 Drawer
W1600 x H315 x D460



Fleet Frame 1390 with Top
Three 450 Drawers
W1400 x H315 x D460



Fleet 1200 Frame, 450 Drawer and Fleet 900 Frame, 857 Drawer in Anthracite, Quadra Basin
Soji Black Pill Mirror

Vanity INFORMATION

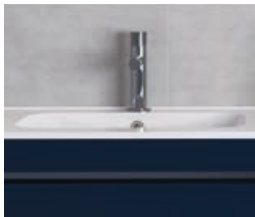
Athena has been designing vanities for New Zealand homes since 1982. We evolve with changing design trends to provide an inspiring selection of vanity, furniture and mirror choices to suit varying design styles.



Vanity Tops

Athenite basins are made from premium solid surface material cast from natural minerals and acrylic polymer.

Basins are non-porous, stain resistant and the end result presents a silky gloss or matt finish that feels warm to the touch.



Vitreous China (or VC) has a classic appearance with its solid glassy finish. VC products offer excellent heat, scratch, stain and wear resistance.

Made from a natural material it is a cast ceramic (clay) glazed with enamel (glass). Due to the nature of its production, visible imperfections are part of the overall look of VC meaning no two tops are produced the same.



Solid surface bench tops and basins are made from acrylic resin composite which is a durable and recyclable material.

The soft, matt white surface completes your Athena vanity while being non-porous and providing an impact, temperature and stain resistant finish.



Laminam is a sleek, Italian-made porcelain surface that's durable, easy to clean, and resistant to scratches and chemicals. Made with recycled materials and Green Star certified for sustainable design, it's a stylish choice for your vanity top.

Laminam Porcelain Tops are supplied precut to suit your basin style:

1. Ø120mm circular centred cutout for top-mount basins
2. 470x324-362mm rectangle cutout designed for Slab or Serifos inset basins



Cabinets

Athena cabinets are manufactured in New Zealand from sustainably managed, low emission New Zealand produced board.

Board used in the construction of Athena vanities uses only low emission E1 standard (or better) board. New Zealand's board (MDF and Particle board) is regarded as the best in the world and is sourced from sustainably managed forest plantations.

Athena colour finishes are extremely high quality. Compared to wood veneer, and paint, they will resist bumps and knocks more readily and are more likely to maintain their as new finish over time as paints and lacquers tend to dull with ongoing exposure to UV.

We strongly recommend viewing a colour sample in store before you purchase.



SOFT CLOSING DOORS AND DRAWERS

Soft closing doors and drawers systems are specified on all Athena cabinets which deliver precision closing and reduce both noise and impact damage.

INTERNAL COSMETICS DRAWERS

Array and Verto Wall cabinets feature an internal cosmetics drawer compartment to provide a functional storage solution while maintaining a sleek, uncluttered external appearance.