

# Fleet MODULAR

Reflect your style with Fleet's 'build your own' customisable design. With flexibility to place the drawers anywhere within the Frame cabinet, a separate basin can be installed above each drawer or open space, creating a symmetrical or off-centre look.



Fleet 1600 Perfect White Frame, 600 Drawers in Triple Duck Egg, Soji Black Pill Mirrors and Quadra Basins

Soft closing adjustable drawers

Wall hung cabinet

Position your basin over the drawer or open space

Top edge mount handle

Solid Surface bench top in matt white

Requires a top mount basin

No tap hole to allow for custom placement or wall mount tapware

SpaceMate® compact waste traps are required for all basins installed above a drawer to provide adequate clearance (additional)

## Sizes

900 | 1200 | 1400 | 1600mm

## Finishes



## Fleet Bench Top Solid Surface 15mm matt white finish



## Optional Basins Details and more designs on pages 24 & 25



## Nikau Handle Supplied with Brushed Silver handle as standard.



Dimensions are nominal. For further specifications and information visit [athena.co.nz](http://athena.co.nz)  
Printed colours are a guide only and may appear different to the actual product.

# Fleet Frame and Drawer Specifications

**WHEN ORDERING:** Complete your chosen product below by specifying one of the following cabinet finishes in the blank space at the end of the code \_  
Use **S** for all colours shown above or refer to [athena.co.nz](http://athena.co.nz) for colour specific codes



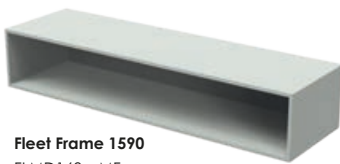
**Fleet Frame 890**  
FLMD090\_\_MF  
W890 x H300 x D455



**Fleet Frame 1190**  
FLMD120\_\_MF  
W1190 x H300 x D455



**Fleet Frame 1390**  
FLMD140\_\_MF  
W1390 x H300 x D455



**Fleet Frame 1590**  
FLMD160\_\_MF  
W1590 x H300 x D455



**Fleet Drawer 450**  
FLMD045\_\_DW  
W450 x H300 x D455



**Fleet Drawer 600**  
FLMD060\_\_DW  
W600 x H300 x D455

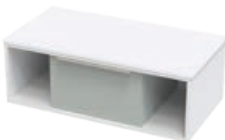


**Fleet Drawer 857**  
FLMD090\_\_DW  
W857 x H300 x D455

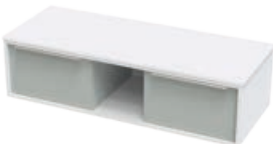


**Fleet Drawer 1157**  
FLMD120\_\_DW  
W1157 x H300 x D455

## Suggested Layouts



**Fleet Frame 890 with Top**  
450 Drawer  
W900 x H315 x D460



**Fleet Frame 1190 with Top**  
Two 450 Drawers  
W1200 x H315 x D460



**Fleet Frame 1390 with Top**  
Two 450 Drawers  
W1400 x H315 x D460



**Fleet Frame 1590 with Top**  
Two 450 Drawers  
W1600 x H315 x D460



**Fleet Frame 890 with Top**  
857 Drawer  
W900 x H315 x D460



**Fleet Frame 1190 with Top**  
600 Drawer  
W1200 x H315 x D460



**Fleet Frame 1390 with Top**  
600 and 450 Drawer  
W1400 x H315 x D460



**Fleet Frame 1590 with Top**  
Two 600 Drawers  
W1600 x H315 x D460



**Fleet Frame 1190 with Top**  
1157 Drawer  
W1200 x H315 x D460



**Fleet Frame 1390 with Top**  
857 Drawer  
W1400 x H315 x D460



**Fleet Frame 1590 with Top**  
857 Drawer  
W1600 x H315 x D460



**Fleet Frame 1390 with Top**  
Three 450 Drawers  
W1400 x H315 x D460



Fleet 1200 Frame, 450 Drawer and Fleet 900 Frame, 857 Drawer in Anthracite, Quadra Basin  
Soji Black Pill Mirror

# Vanity INFORMATION

---

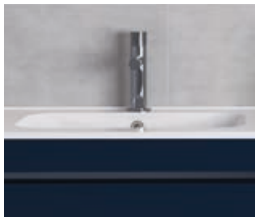
Athena has been designing vanities for New Zealand homes since 1982. We evolve with changing design trends to provide an inspiring selection of vanity, furniture and mirror choices to suit varying design styles.



## Vanity Tops

Athenite basins are made from premium solid surface material cast from natural minerals and acrylic polymer.

Basins are non-porous, stain resistant and the end result presents a silky gloss or matt finish that feels warm to the touch.



Vitreous China (or VC) has a classic appearance with its solid glassy finish. VC products offer excellent heat, scratch, stain and wear resistance.

Made from a natural material it is a cast ceramic (clay) glazed with enamel (glass). Due to the nature of its production, visible imperfections are part of the overall look of VC meaning no two tops are produced the same.



Solid surface bench tops and basins are made from acrylic resin composite which is a durable and recyclable material.

The soft, matt white surface completes your Athena vanity while being non-porous and providing an impact, temperature and stain resistant finish.



Laminam is a sleek, Italian-made porcelain surface that's durable, easy to clean, and resistant to scratches and chemicals. Made with recycled materials and Green Star certified for sustainable design, it's a stylish choice for your vanity top.

Laminam Porcelain Tops are supplied precut to suit your basin style:

1. Ø120mm circular centred cutout for top-mount basins
2. 470x324-362mm rectangle cutout designed for Slab or Serifos inset basins



## Cabinets

Athena cabinets are manufactured in New Zealand from sustainably managed, low emission New Zealand produced board.

Board used in the construction of Athena vanities uses only low emission E1 standard (or better) board. New Zealand's board (MDF and Particle board) is regarded as the best in the world and is sourced from sustainably managed forest plantations.

Athena colour finishes are extremely high quality. Compared to wood veneer, and paint, they will resist bumps and knocks more readily and are more likely to maintain their as new finish over time as paints and lacquers tend to dull with ongoing exposure to UV.

**We strongly recommend viewing a colour sample in store before you purchase.**



## SOFT CLOSING DOORS AND DRAWERS

Soft closing doors and drawers systems are specified on all Athena cabinets which deliver precision closing and reduce both noise and impact damage.

## INTERNAL COSMETICS DRAWERS

Array and Verto Wall cabinets feature an internal cosmetics drawer compartment to provide a functional storage solution while maintaining a sleek, uncluttered external appearance.