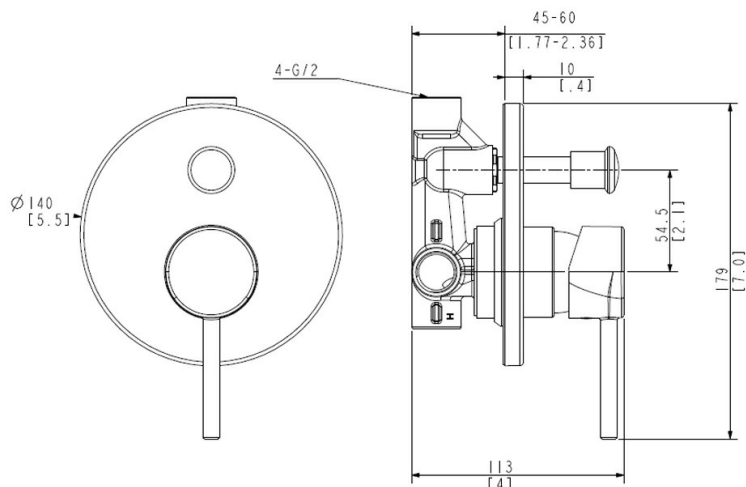







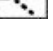



UNO DIVERTER MIXER

42971.xx

ELEMENTI



| | | |
|--|---|--|
| 5 | Guarantee | 5 Year Guarantee on coloured finish |
| 10 | Guarantee | 10 Year Guarantee |
|  | Mains Pressure | Suitable for Mains Pressure. |
|  | Flawless Finish | Advanced plating provides a durable surface with a long lasting finish |
|  | Effortless Control | Advanced cartridge technology provides a wide operating angle and smooth operation |
|  | Smooth Flow | Aerator reduces scaling while delivering a smooth even flow |
|  | Chrome Plate | A base of copper is first applied followed by a layer of nickel and then finally a hard gloss coating of chromium to achieve a shiny hard wearing finish. |
|  | Blackened Oil Bronze: Black | Parts are firstly nickel plated then blackened oxidation process to apply the base colour. and a transparent liquid polymer is applied achieve a mat finish and hardened surface. |
|  | Electroplated: Gun Metal | Electrical current is used to dissolve components into Lacquer that then adhere to the surface. |
|  | Electroplated with PVD: Brushed Nickel | Electrical current is used to dissolve components into Lacquer that then adhere to the surface. A thin metal-spray coating in the form of very thin layers is finally applied using PVD process. |
|  | Electroplated with PVD: Brushed Brass | Electrical current is used to dissolve components into Lacquer that then adhere to the surface. A thin metal-spray coating in the form of very thin layers is finally applied using PVD process. |

The Uno collection offers a glamorous look without being too ostentatious. After years of chrome dominating as the must-have metal, there has been a move away from the high shine, perfect finish of Chrome towards finishes like Brushed Nickel, Gun Metal, Black and Brushed Brass.