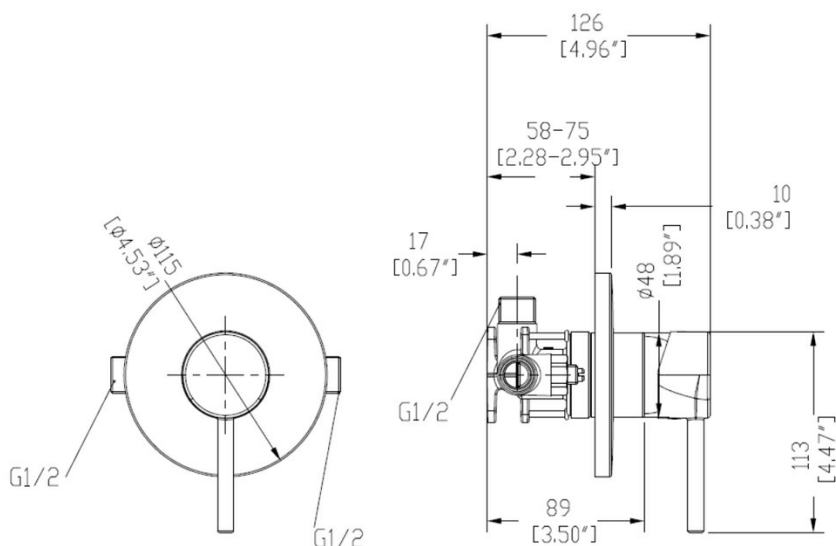











## UNO SHOWER MIXER - CHROME

42970.xx

ELEMENTI



<b>10</b>	<b>Guarantee</b>	10 Year Guarantee
<b>5</b>	<b>Guarantee</b>	5 Year Guarantee on coloured finish
	<b>Multi Pressure</b>	Suitable for Multi Pressure.
	<b>Flawless Finish</b>	Advanced plating provides a durable surface with a long lasting finish
	<b>Effortless Control</b>	Advanced cartridge technology provides a wide operating angle and smooth operation
	<b>Indicators</b>	Includes standard and coloured indicators.
	<b>Chrome Plate</b>	A base of copper is first applied followed by a layer of nickel and then finally a hard gloss coating of chromium to achieve a shiny hard wearing finish.
	<b>Blackened Oil Bronze: Black</b>	Parts are firstly nickel plated then blackened oxidation process to apply the base colour. and a transparent liquid polymer is applied achieve a mat finish and hardened surface.
	<b>Electroplated: Gun Metal</b>	Electrical current is used to dissolve components into Lacquer that then adhere to the surface.
	<b>Electroplated with PVD: Brushed Nickel</b>	Electrical current is used to dissolve components into Lacquer that then adhere to the surface. A thin metal-spray coating in the form of very thin layers is finally applied using PVD process.
	<b>Electroplated with PVD: Brushed Brass</b>	Electrical current is used to dissolve components into Lacquer that then adhere to the surface. A thin metal-spray coating in the form of very thin layers is finally applied using PVD process.

The Uno collection offers a glamorous look without being too ostentatious. After years of chrome dominating as the must-have metal, there has been a move away from the high shine, perfect finish of Chrome towards finishes like Brushed Nickel, Gun Metal, Black and Brushed Brass.