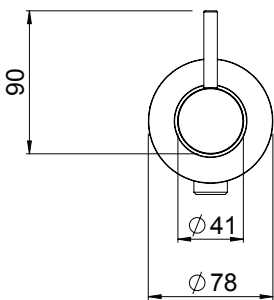
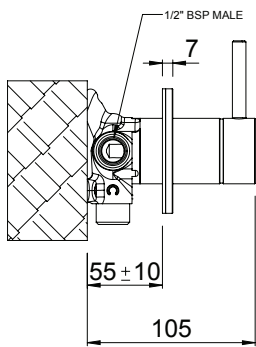
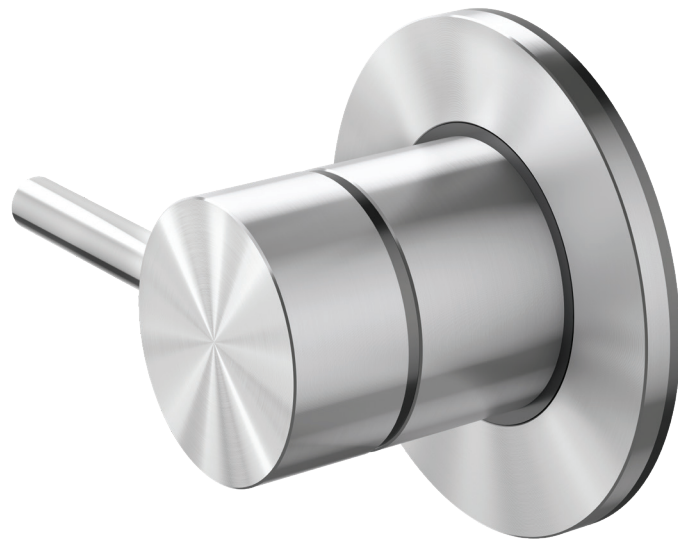


TŪROA SHOWER DIVERTER

STAINLESS STEEL AND LEAD FREE BRASS

These high quality, high strength, corrosion resistant materials are lead free, therefore preserving water quality for both consumption and bathing.



CONSTRUCTION: Stainless steel, brass and plastic
CARTRIDGE TYPE: Ceramic
CLASSIFICATION: Suitable for mains/high pressure only
INLET CONNECTIONS: 1/2" BSP Male
OUTLET CONNECTIONS: 1/2" BSP Male
WORKING PRESSURE: 150 - 1000kPa
OPERATING TEMPERATURE: 5 °C - 80 °C

- Stainless steel and lead free brass
- Stand-alone, rotary diverter
- Modern minimalist aesthetic
- Ceramic cartridge
- 20mm of installation tolerance
- Built to last

TUDSS	Stainless Steel
TUDGD	Brushed Gold
TUDGR	Brushed Graphite
TUDGM	Gun Metal Black