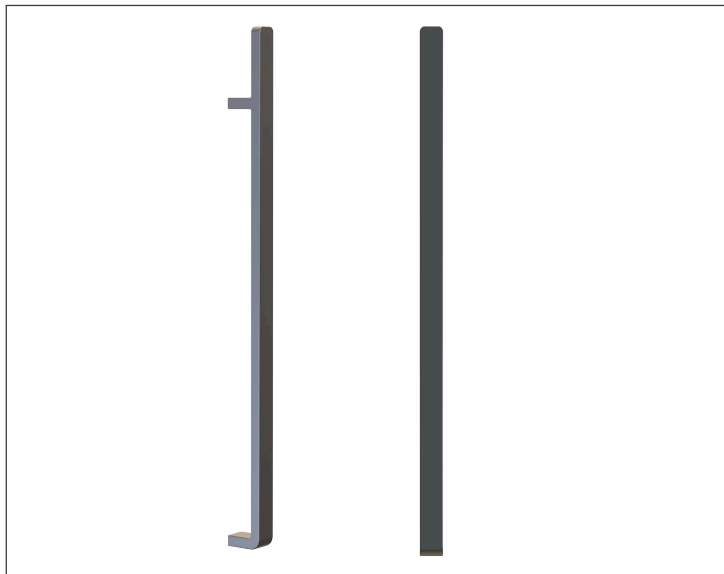


SPECIFICATION SHEET

Titan Square Vertical Heated Towel Rail



Features

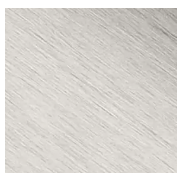
- Colours: Chrome, Brushed Nickel, Matte Black, Brushed Brass, Brushed Copper & Gunmetal
- Dimensions: 900H x 40W x 70D
- Suitable for vertical or horizontal installation.
- Multi-connect wiring
- IP55 Rating, 12V for use in Zone 1
- 20W (Chrome, Brushed Nickel, Gunmetal, Brushed Copper, Brushed Brass)
23W (Matte Black)
- Can be used in conjunction with a timer

Note: 12V transformer is required for installation and needs to be purchased separately. 20-70 Watts [LT050], 35-105 Watts [LT051]

Colour Options with Code



Chrome
TN900



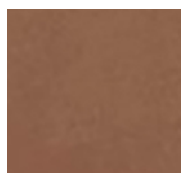
Brushed Nickel
TN900NK



Matte Black
TN900MB



Gunmetal
TN900GM



Brushed Copper
TN900CP



Brushed Brass
TN900BB

Technical Details

Note: All measurements shown are in millimetres. Sizes are nominal.

