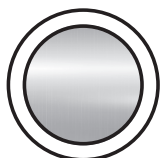


# METHVEN

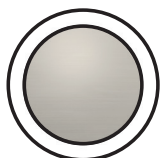
## WAIPORI MK2



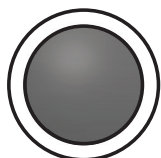
### WAIPORI MK2 BASIN MIXER



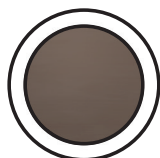
CHROME



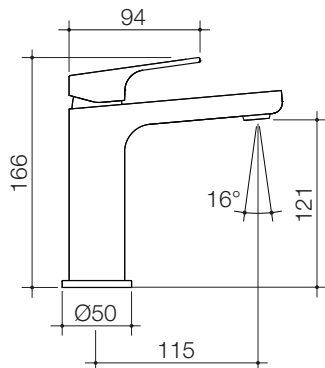
BRUSHED  
NICKEL



GUNMETAL



BRUSHED  
BRONZE



**CONSTRUCTION:** Low-lead brass body

**CARTRIDGE:** Ceramic

**CLASSIFICATION:** Suitable for all pressure systems

**INLET CONNECTIONS:** 1/2" BSP Female

**WORKING PRESSURES:** 35 - 500kpa

**DIMENSIONS FOR FITTING:** 34 - 36 mm diameter hole

**OPERATING TEMPERATURE:** 5 °C - 70 °C

- An evolution of Waipori's distinctive tapered design
- Superior 25mm ceramic disc cartridge eliminates drips
- Concealed aerator with adjustable stream direction
- Suitable for all pressures above 35kPa
- Constructed from lead free brass
- Chrome or PVD finish for striking design & durability
- WELS 6 Star, ≤4.5L/min

WPBCP6F

Chrome

WPBBN6F

Brushed Nickel

WPBGM6F

Gunmetal

WPBBBZ6F

Brushed Bronze

**THE METHVEN GUARANTEE.** For total peace of mind, all domestic tapware products include a 20 Year Parts and Labour Guarantee. For commercial installations, a 5 Year Guarantee on Parts and Labour applies. For full terms and conditions, visit [www.methven.com](http://www.methven.com).